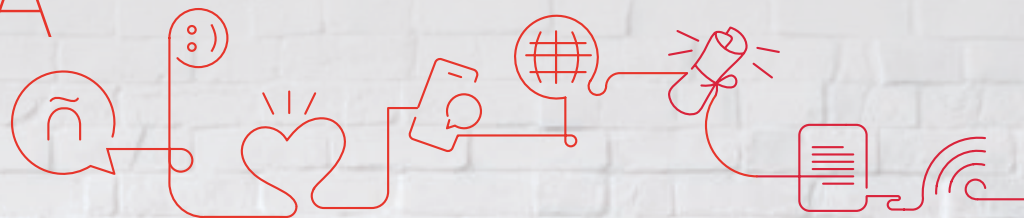


# WELCOME TO A SPANISH-SPEAKING WORLD



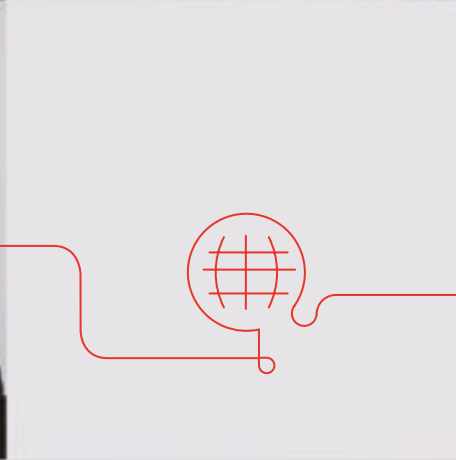
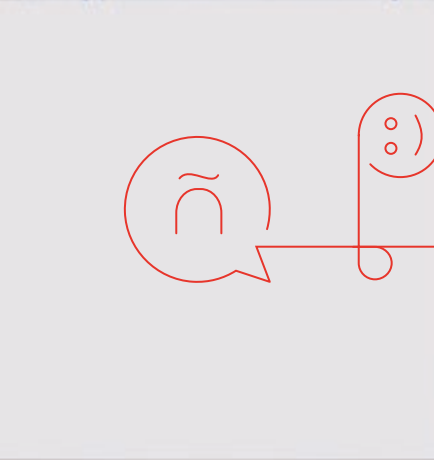
SERVICIO  
INTERNACIONAL  
DE EVALUACIÓN  
DE LA LENGUA  
ESPAÑOLA

Created and developed by:



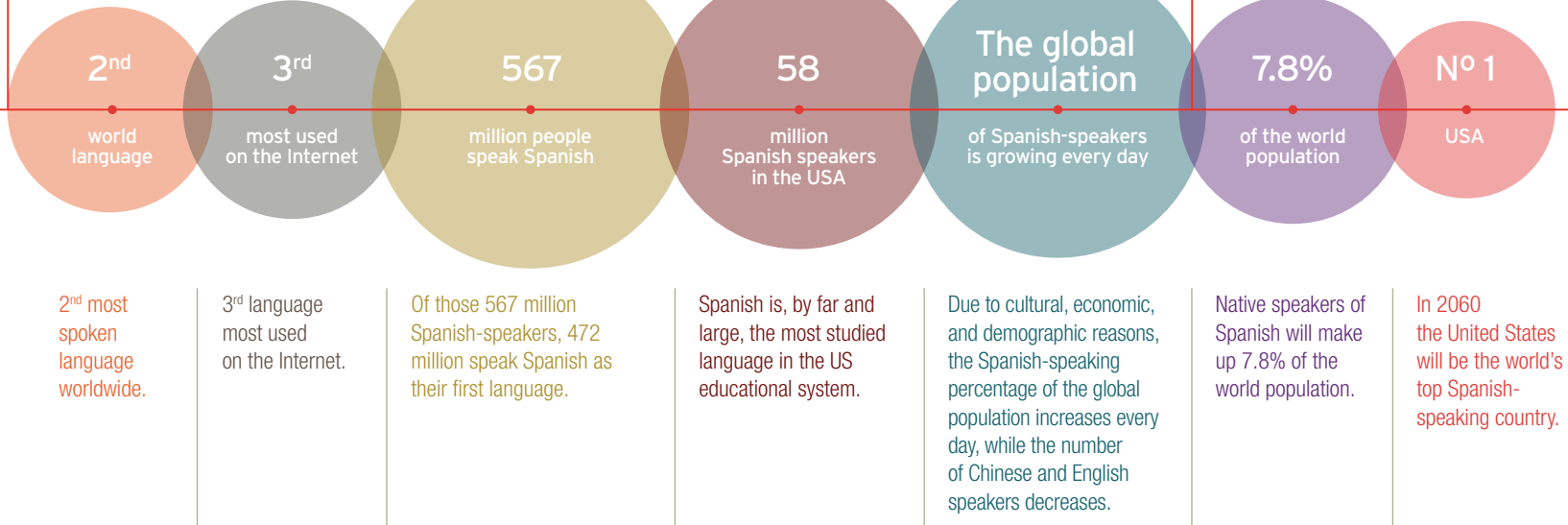
Run by:

*Telefónica* EDUCACIÓN DIGITAL



# THE WORLD SPEAKS SPANISH

## Currently



**SPANISH IS A DYNAMIC, LIVING LANGUAGE THAT IS EXPERIENCING CONSTANT GROWTH IN POLITICAL, SOCIAL, ECONOMIC AND CULTURAL ENVIRONMENTS AT AN INTERNATIONAL LEVEL**





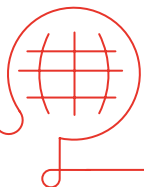
# WHAT IS SIELE?

## Servicio Internacional de Evaluación de la Lengua Española.

It is the most  
**comprehensive,**  
**versatile and prestigious**  
system for **assessing**  
**and certifying** Spanish  
language proficiency.

SIELE certifies the degree  
of proficiency in the  
Spanish language with  
**four tests:** Reading  
comprehension, Listening  
comprehension,  
Written expression

and interaction and  
Oral expression and  
interaction; the exam  
also takes as a reference  
the levels established by  
the *Common European  
Framework of Reference  
for Languages* (CEFR).



## INTERNATIONAL RECOGNITION DIGITAL PRESTIGE

# SIELE IN 3 KEYS

This is **the first internationally recognized digital certification that accredits Spanish proficiency from a Pan-Hispanic point of view**, which reinforces **its validity at a global level** and recognizes the richness of a language so alive and diverse as is Spanish.

**Reliability** of the SIELE exams is guaranteed by the experience of four of the most prestigious cultural and academic institutions: the **Instituto Cervantes**, the **Universidad Nacional Autónoma de México**, the **Universidad de Salamanca** and the **Universidad de Buenos Aires**. SIELE has more than 75 associated universities present in 20 countries in Latin America which cooperate

in the research of Spanish language teaching, back the quality of the content and contribute innovative didactic material.

Exam management, administration and scoring is carried out via **technological means**, which offers **simplicity, comfort and speed** throughout the entire certification process. At **siele.org**, candidates

can select their exam modality, location and date, and after sitting the exam, obtain a certificate or report from the same site within a period of no more than three weeks.

# WHAT SIELE OFFERS?



## CANDIDATES

Key certificate for their training and professional career paths.

Fast international recognition (results in under three weeks).

Simple and flexible online registration.



## UNIVERSITIES

Unique tool to guarantee the level of Spanish required in training programs.

Increases employability rates for its students, as every day more companies recognize the SIELE certificate.

Opportunity to make up part of a worldwide alliance.



## COMPANIES

Reduces costs and time, simplifying selection processes that require Spanish level assessment.

Segments professional profiles that have different linguistic needs according to task type and job.

For training-oriented companies, the possibility for business expansion offering specialized preparation courses and programs for the SIELE exam.



## EXAMINATION CENTERS

Opportunity for technological innovation.

Business expansion given the rising demand from people interested in certifying their level of Spanish.

Associate the center's image with the SIELE brand prestige and its endorsing institutions.

# SIELE PROVIDES VALUE

SIELE accredits language proficiency so that people, institutions, and companies can achieve their objectives in a Spanish-speaking world





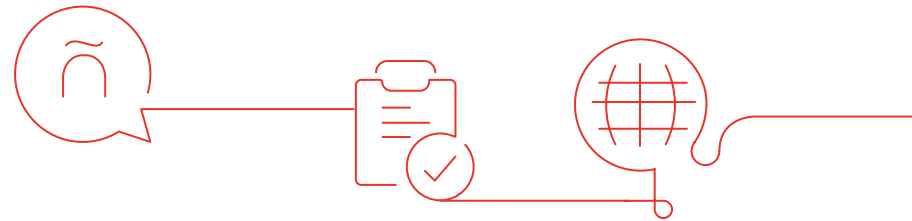


# SIELE GLOBAL

## THE MOST COMPREHENSIVE EXAM TO CERTIFY SPANISH LANGUAGE PROFICIENCY

A **single multi-level exam** that enables the candidate to obtain a SIELE certificate, a document that includes a score from 0 to 1000, the result of the added scores from each of the four tests, and corresponding to the levels of the *Common European Framework of Reference for Languages* (CEFR).





## READING COMPREHENSION

**5 tasks**  
with a total of 38 questions.

Questions formulated from texts that must be answered by selecting the correct options.

Duration:  **60 minutes.**

Automatic scoring. 

Maximum score: **250 points.**



## LISTENING COMPREHENSION

**6 tasks**  
with a total of 38 questions.

Questions formulated from a speech to be answered by selecting the correct options.

Duration:  **55 minutes.**

Automatic scoring. 

Maximum score: **250 points.**




## WRITTEN EXPRESSION AND INTERACTION

**2 tasks.**

Questions formulated from texts and answered with a written response.

Duration:  **50 minutes.**

Manual scoring  
by SIELE expert  
linguists. 

Maximum score: **250 points.**




## ORAL EXPRESSION AND INTERACTION

**5 tasks.**

Questions formulated from a text or a speech and answered orally through a recording system.

Duration:  **15 minutes.**

Manual scoring  
by SIELE expert  
linguists. 

Maximum score: **250 points.**

# 4 INDEPENDENT MODALITIES

## SPECIFIC MODALITIES FOR CONCRETE GOALS

In addition to the Global SIELE exam,  
there are four exam modalities that are  
combined into different tests.



Certificate the candidate's level of **comprehension** in Spanish.

**Reading comprehension**



**Listening comprehension**

Exam duration:



Exam scoring: **500 points**  
(250 + 250).

Automatic scoring (closed-ended questions).



Certificate the candidate's level of **reading** and **writing** in Spanish.

**Reading comprehension**



**Written expression and interaction**

Exam duration:



Exam scoring: **500 points**  
(250 + 250).

Automatic scoring + SIELE Scorer.



Certificate the candidate's level of oral **comprehension** and **expression** in Spanish.

**Listening comprehension**



**Oral expression and interaction**

Exam duration:



Exam scoring: **500 points**  
(250 + 250).

Automatic scoring + SIELE Scorer.



**S4**



Certificate the candidate's level of **oral expression** in Spanish.

**Oral expression and interaction**

Exam duration:



minutes.

Exam scoring: **250 points.**

SIELE Scorer (open-ended questions).

Results correspond to CEFR levels.





# A CERTIFICATE THAT OPENS DOORS ON A GLOBAL LEVEL

With SIELE, candidates can **project their profile internationally** and be more prepared when applying for **University** or competing in **company selection processes**.

THE SIELE CERTIFICATE PROVIDES A  
COMPETITIVE ADVANTAGE TO REACHING  
ACADEMIC AND PROFESSIONAL GOALS  
IN A GLOBAL SETTING



CANDIDATES



## SIELE IS RELIABILITY AND PRESTIGE

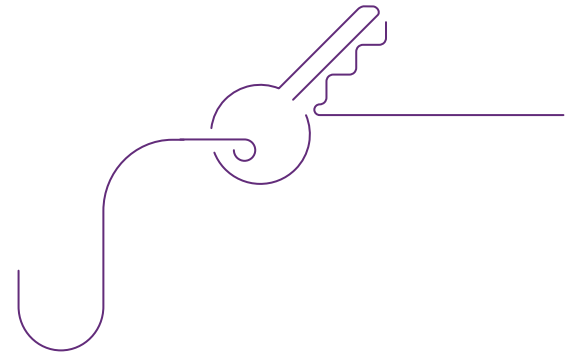
- > The exams are created by the **Instituto Cervantes**, the **Universidad Nacional Autónoma de México**, the **Universidad de Salamanca** and the **Universidad de Buenos Aires**. More than 75 associated Ibero-American universities are actively involved in SIELE, providing reliability, validity and confidence.
- > Exam administration follows a rigorous protocol to guarantee quality.
- > Exam content and scoring mechanisms are permanently supervised at both technical and academic levels.

## SIELE IS ADAPTABLE AND FLEXIBLE

- > The candidate chooses the exam location, date and modality.
- > Exam content takes into consideration the linguistic varieties of the Spanish language and current cultural contexts.

## SIELE IS DIGITAL, SIMPLE AND FAST

- > Registration takes place online at **siele.org**
- > Certificates and reports can be downloaded directly from the website, and a verification code is provided for presentation in company and university processes around the world.
- > A single exam identifies the candidate's degree of knowledge in levels A1, A2, B1, B2 and C1.



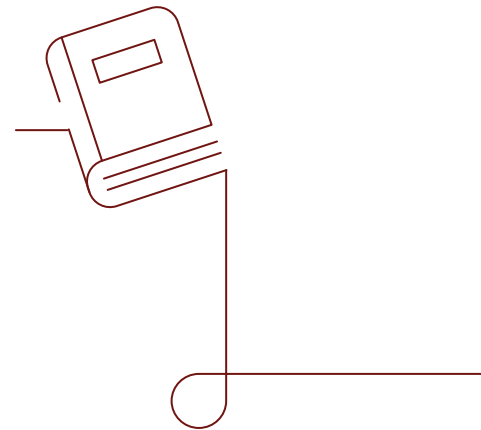


# ALLIANCES FOR A PROJECT OF EXCELLENCE

Integrating SIELE into admission processes means becoming part of a project of excellence with a global scope. The purpose is two-fold:

- > Future students with the necessary linguistic abilities.
- > Improve employment opportunities for graduates.

It enables a connection between University and institutional training plans and companies' human capital needs.



## UNIVERSITIES



### SIELE IS PRESTIGE

- > Contributing to an international project focused on promoting and strengthening the global presence of the Spanish language.
- > The credibility of the institutions that are involved: the **Instituto Cervantes**, the **Universidad Nacional Autónoma de México**, the **Universidad de Salamanca** and the **Universidad de Buenos Aires**.
- > To be part of an innovative academic solution.

### SIELE IS EMPLOYABILITY

- > The security that your students will have better professional opportunities.
- > International validity; SIELE certificates and reports correspond to the scoring of the *Common European Framework of Reference for Languages* (CEFR).
- > Enhance the University's brand by strengthening the employability of its students.

### SIELE IS A GUARANTEE

- > The certainty that new students will have the required level of Spanish.
- > Simplifying the admissions process, by using a standard tool worldwide.
- > Segmentation, as it allows each course program to request a specific required level through the scores obtained in the exam modalities.

JOIN THE MOST IMPORTANT PAN-HISPANIC  
CULTURAL PROJECT OF OUR TIME

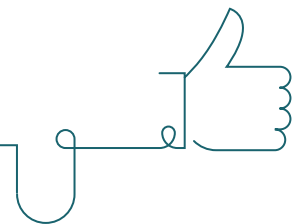


# HUMAN CAPITAL FOR THE 21<sup>ST</sup> CENTURY

SIELE helps **create specialized work teams** that are adapted to the requirements of a **global context where Spanish prevails**, both in communication and in opening new markets.

Incorporating SIELE as a **reference for selection processes** is to incorporate a flexible and standardized tool **to simplify and strengthen** the training of your professional staff.

For **training-oriented companies**, this represents a **business opportunity** with growth prospects and international scope.







## SIELE FOR SELECTION

- > The benchmark tool for selecting candidates with Spanish proficiency. Simplifies the process and reduces costs.
- > Greater efficacy and precision in selection with the use of specific exams for the different linguistic skills required for each position.
- > Guarantee that the scores obtained are appropriate for the candidate's level: the certificates are renewed and the exams updated.

## SIELE FOR SPECIALIZATION

- > Segmentation of professional profiles based on the different skills measured with SIELE, which provides significant information for positions requiring Spanish proficiency.
- > Company staff can take a SIELE exam to assess their knowledge and skills in the Spanish language.

## SIELE FOR TRAINING

- > A business opportunity for companies and organizations dedicated to training professionals.
- > Offering SIELE preparation courses means participating in a market that will greatly expand in the coming years.

COMPANIES



A TOOL  
FOR TRAINING  
AND SELECTING  
THE VERY BEST  
PROFESSIONALS



# A NETWORK OF PRESTIGE AND INNOVATION

**A SIELE examination center is an entity and space recognized to manage and supervise SIELE exam.**

For training or educational entities, it represents clear **business opportunity with added social impact.**

To be a part of SIELE is to be part of a network promoted by the **Instituto Cervantes**,

the **Universidad Nacional Autónoma de México**, the **Universidad de Salamanca** and the **Universidad de Buenos Aires**. It is to support innovation in strategies for the dissemination and assessment of the Spanish language.

AN OPPORTUNITY TO  
STRENGTHEN THE PRESENCE  
AND ACTIVITY OF YOUR  
ORGANIZATION



## EXAMINATION CENTERS



### **SIELE BROADENS THE ACTIVITY AND SCOPE OF ITS CENTERS**

- > SIELE exam offerings will attract new students to the center.
- > The center will receive SIELE revenue every time a candidate takes an exam at their facilities.

### **SIELE PROMOTES YOUR BRAND AND CREDIBILITY OF ITS CENTERS**

- > Implies positioning as an entity that supports innovation and promotion of the Spanish language on an international level.
- > Add values such as prestige and technical and academic quality.
- > Achieves greater visibility and enables networking by figuring in the different SIELE communication channels.

### **HOW TO BECOME A SIELE EXAMINATION CENTER?**

- > There are three main criteria:
  - Prestige of the applying entity.
  - Guarantee of good practices regarding management.
  - Necessary human and technical team and equipment necessary to administer the exams.
- > Apply by accessing **siele.org** and fill out the form under the section titled "examination centers".



SUPPORTED  
BY EXCELLENCE  
AND KNOWLEDGE

## INSTITUTIONS AT THE FOREFRONT OF THE SPANISH LANGUAGE

The excellence of the institutions that create, promote and manage SIELE is the key to its **academic and technological reliability**.

SIELE is promoted by the **Instituto Cervantes**, the **Universidad Nacional Autónoma de México**,

the **Universidad de Salamanca** and the **Universidad de Buenos Aires**. Development of the technological platform and its global commercialization are carried out by **Telefónica Educación Digital**.

The **associated universities** join these main institutions: a series of qualified Ibero-American universities that actively research training in Spanish language instruction, oversee the quality of exams and provide a large variety of didactic material.



# INSTITUTIONAL CREDENTIALS



## GOVERNING BODY:

### INSTITUTO CERVANTES:

A public institution created by Spain in 1991 to promote and teach the Spanish language and the other co-official languages.

- > Has a presence in 90 cities in 43 countries on all five continents.
- > 60 libraries with a bibliographic collection of over 1,300,000 volumes.
- > More than 14,000 classes taught in 2014-2015, and almost 5,000 cultural events held around the world.



### UNIVERSIDAD NACIONAL AUTÓNOMA DE MÉXICO:

Founded in 1551, it is the Ibero-American university with the most enrolled students. Its fundamental purpose is to train outstanding professionals for the country and the world, as well as to disseminate the benefits of culture to the greatest extent possible.

- > 342,542 students in the 2014-2015 academic year.
- > 41 postgraduate programs, 37 specialization programs and 116 degrees.
- > 198 partnerships with international institutions.



### UNIVERSIDAD DE SALAMANCA:

The Universidad de Salamanca was founded in 1218. It is the second most important Spanish university in terms of students from other regions of the country.

- > 47% of university Master's degree students and 49% of doctoral students come from countries other than Spain.
- > Of these foreign students, the most significant percentage comes from Ibero-American regions.
- > The university is considered to be one of the best Spanish universities for the study of modern languages, particularly Hispanic and English philology.



UNIVERSIDAD  
DE SALAMANCA  
CAMPUS DE EXCELENCIA INTERNACIONAL

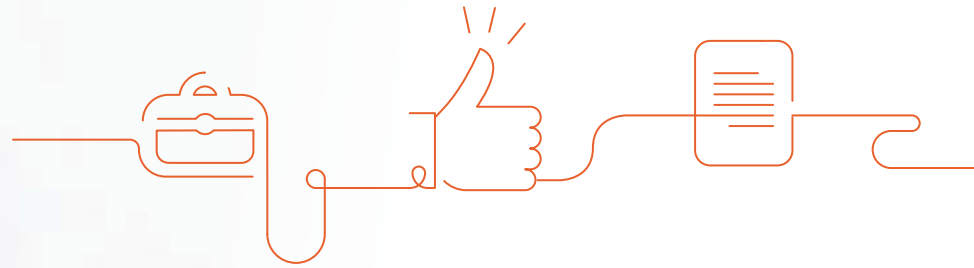
### UNIVERSIDAD DE BUENOS AIRES:

The UBA is a public university that was founded in 1821 and is considered to be one of the most prestigious institutions in the region to study at.

- > It has more than 300,000 students, offers 78 undergraduate degrees and 116 secondary degrees, in addition to various postgraduate, doctoral, and postdoctoral degrees.
- > Close to 30% of all scientific research carried out in Argentina is performed at the UBA.
- > Four of the five Argentine Nobel Prize winners have been students and professors at the university.



UBA  
Universidad de Buenos Aires



### **TELEFÓNICA EDUCACIÓN DIGITAL (TED)**

---

TED is the Telefónica Group company specializing in online Training and Digital Education solutions. It has more than 500 professional in 5 countries (Spain, Brazil, Colombia, Peru and Chile) and more than 300 clients distributed throughout Europe, The United States and Latin America.

With over 15 years of experience in the market, TED has offered training to more than 4 million students through a variety of online platforms.

***Telefónica*** **EDUCACIÓN DIGITAL**

## ASSOCIATED UNIVERSITIES:

More than 75 universities in more than 20 Ibero-American countries are actively involved with SIELE, performing ongoing research in Spanish language teaching, supporting content quality and providing innovative didactic materials. These are the institutions, among others:

- > Universidad Blas Pascal (Argentina)
- > Universidad del Salvador (Argentina)
- > Universidad Nacional de Rosario (Argentina)
- > Universidad Nuestra Señora de La Paz (Bolivia)
- > Pontificia Universidad Católica de Valparaíso (Chile)
- > Universidad de Chile (Chile)
- > Universidad de Concepción (Chile)
- > Instituto Caro y Cuervo (Colombia)
- > Universidad del Norte (Colombia)
- > Universidad Sergio Arboleda (Colombia)
- > Universidad de Costa Rica (Costa Rica)
- > Universidad de La Habana (Cuba)
- > Pontificia Universidad Católica del Ecuador (Ecuador)
- > Universidad de Cuenca (Ecuador)
- > Universidad San Francisco de Quito (Ecuador)
- > Universidad Centroamericana José Simeón Cañas (UCA) (El Salvador)
- > Universidad Antonio de Nebrija (España)
- > Universidad Autónoma de Barcelona (España)
- > Universidad Autónoma de Madrid (España)
- > Universidad Carlos III (España)
- > Universidad Complutense de Madrid (España)
- > Universidad de Alcalá de Henares (España)
- > Universidad de Alicante. Centro Superior de Idiomas (España)
- > Universidad de Granada (España)
- > Universidad de Málaga (España)
- > Universidad de Navarra (España)
- > Universidad de Santiago de Compostela (España)
- > Universidad de Sevilla (España)
- > Universidad de Valencia (España)
- > Universidad de Zaragoza (España)
- > Universidad Internacional Menéndez Pelayo (España)
- > Universidad Politécnica de Madrid (España)
- > Universitat Pompeu Fabra (España)
- > Universidad Rafael Landívar (Guatemala)
- > Universidad del Valle de Guatemala (Guatemala)
- > Universidad Pedagógica Nacional Francisco Morazán (Honduras)
- > Instituto Tecnológico de Estudios Superiores de Ecatepec (México)
- > Instituto Tecnológico y de Estudios Superiores de Monterrey (México)
- > Universidad Autónoma del Estado de Hidalgo (México)
- > Universidad de Colima (México)
- > Universidad de Guadalajara (México)
- > Universidad Nacional Autónoma de Nicaragua, León (UNAN-León)
- > Universidad Nacional Autónoma de Nicaragua, Managua (UNAN-Managua)
- > Universidad de Panamá (Panamá)
- > Universidad Nacional de Asunción (Paraguay)
- > Universidad Ricardo Palma (Perú)
- > Universidad del Turabo (Puerto Rico)
- > Universidad de Puerto Rico (Puerto Rico)
- > Pontificia Universidad Católica Madre y Maestra (República Dominicana)
- > Universidad APEC (UNAPEC) (República Dominicana)
- > Universidad ORT (Uruguay)
- > Universidad Central de Venezuela. Facultad de Humanidades y Educación (Venezuela)



Created and developed by:



Run by:



[siele.org](https://siele.org)